

zu Orlando di Lasso  
Prophetæ Sibyllarum

prolog (carmina chromatico)

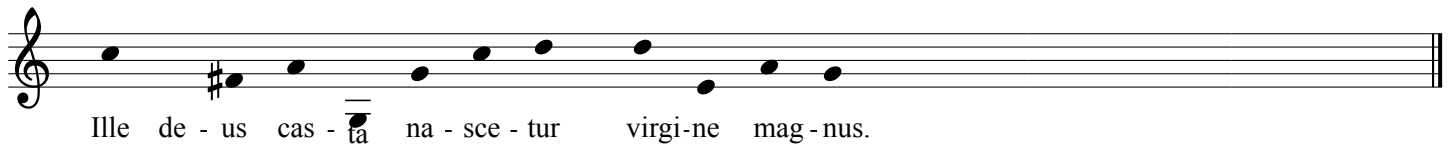
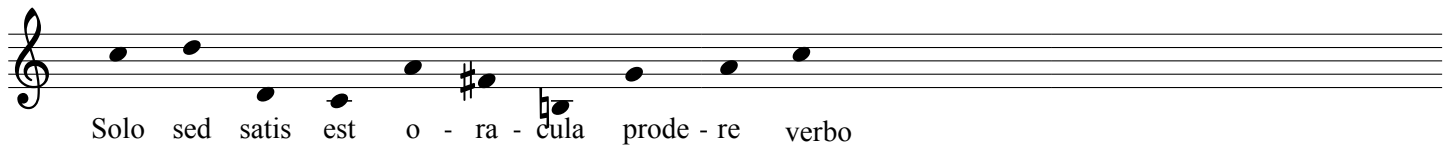
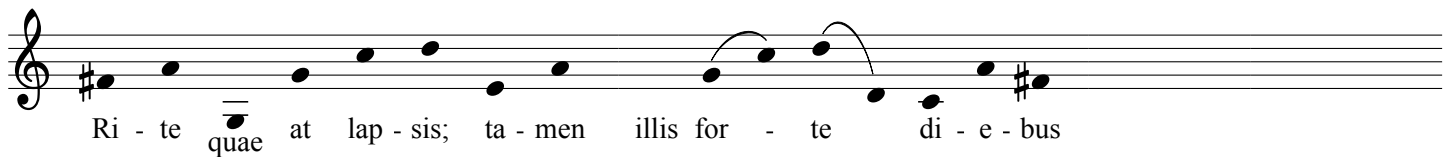
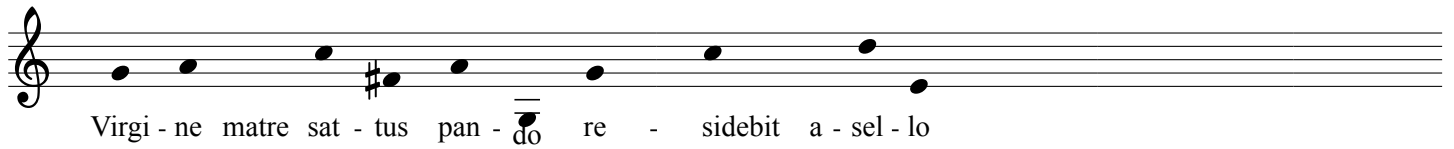


Carmina chro - ma - tico quae au - dis modu - la - ta te - no - re

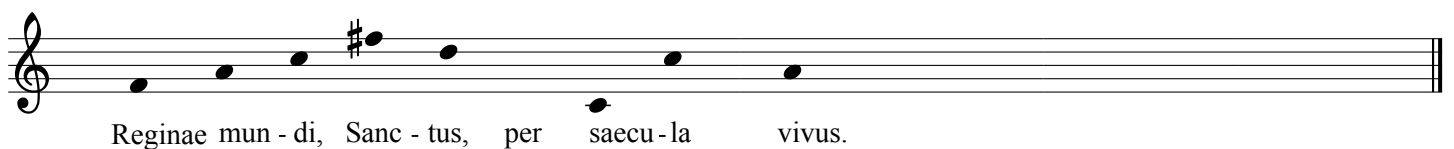
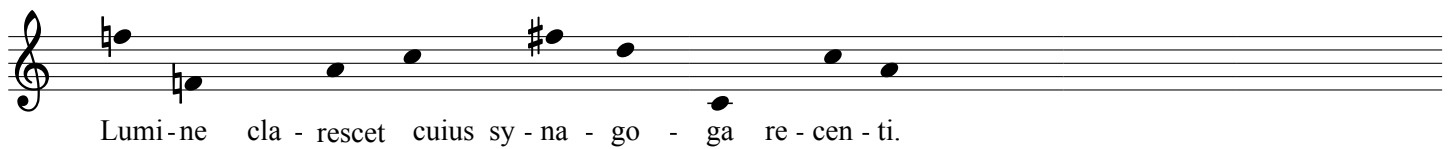
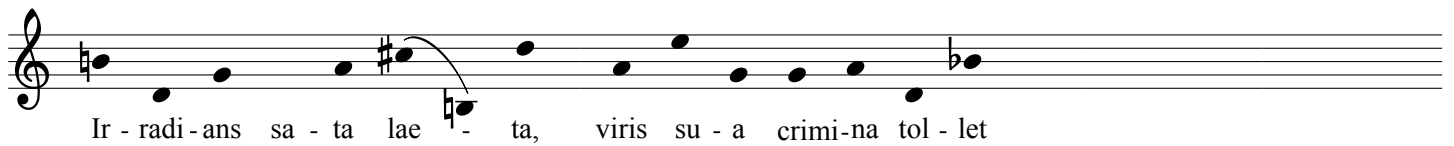
Haec sunt il - la, quibus nostrae olim ar - ca - na sa - lutis

bis senae in - tre - pido ceci - ne - runt ore Si - byl - lae.

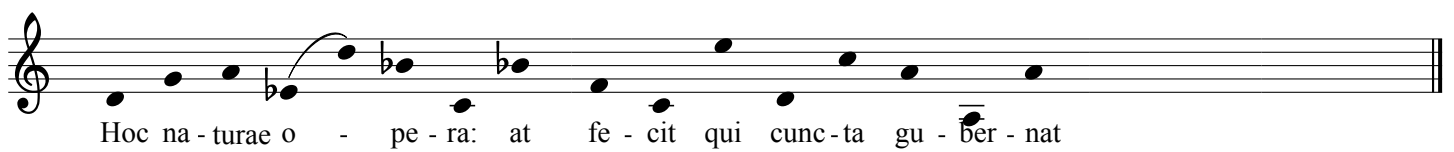
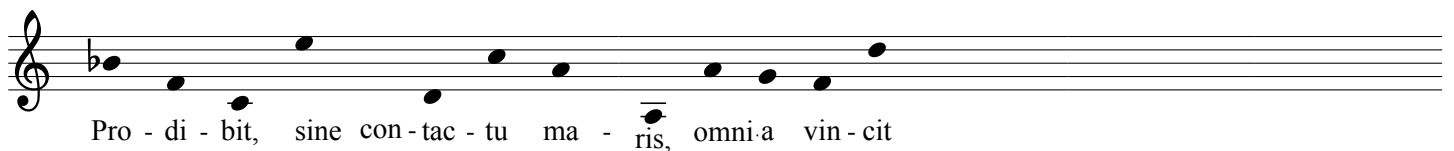
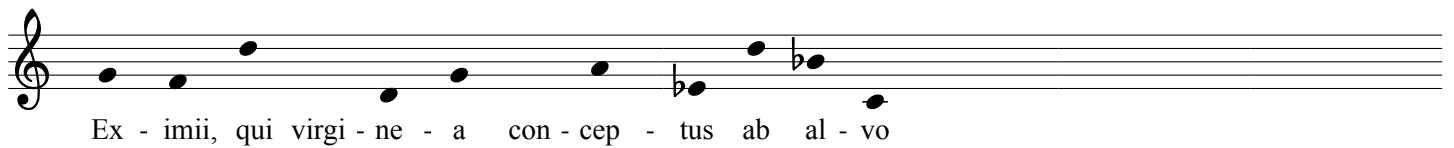
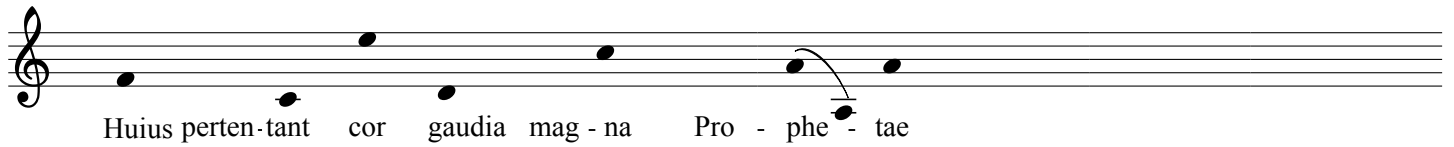
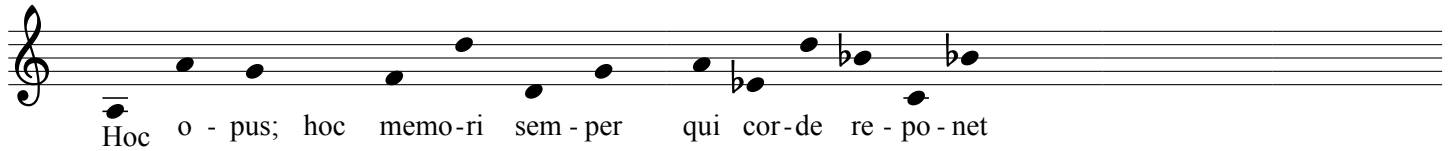
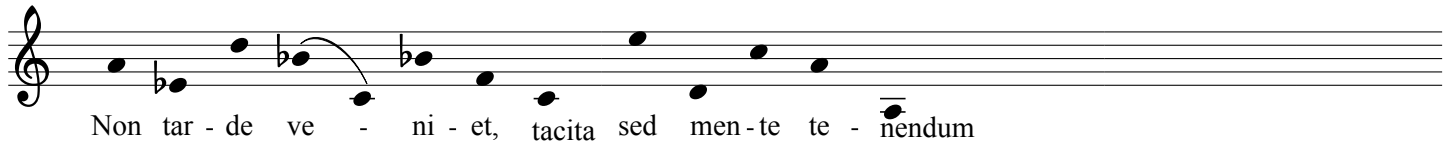
# 1. Sibylla Persica



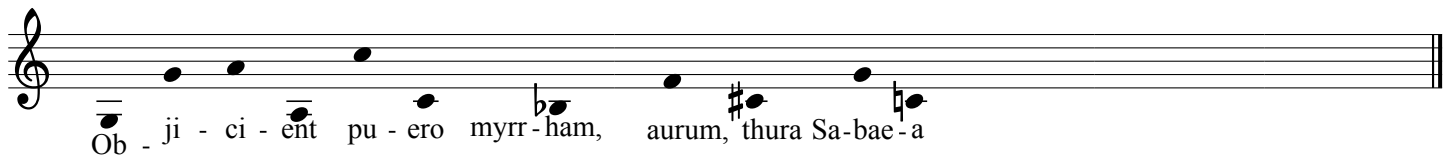
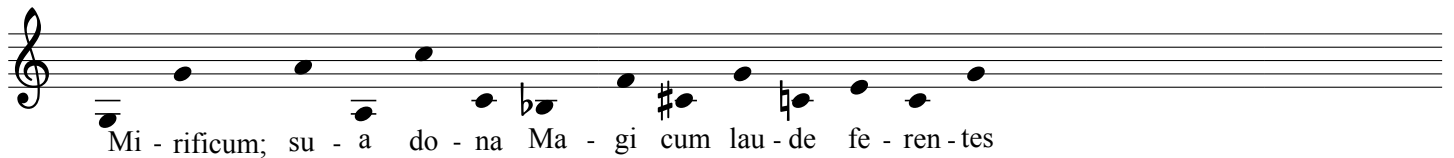
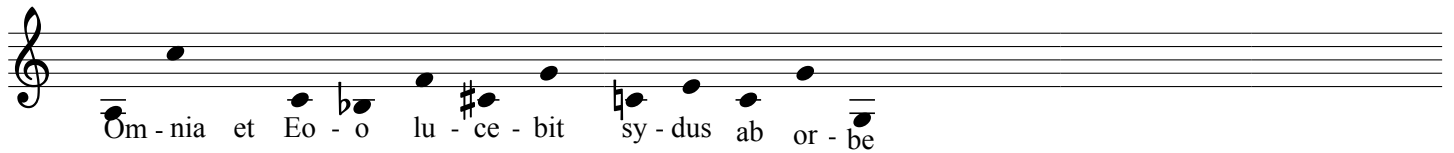
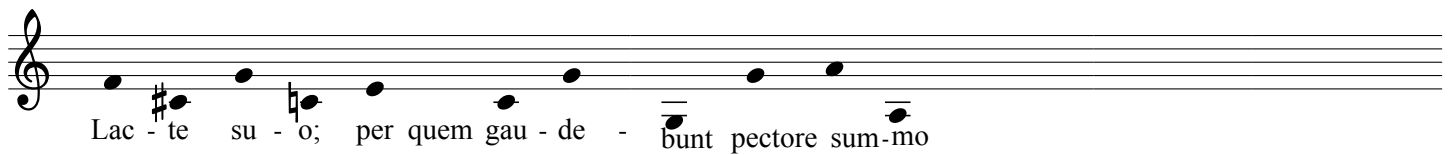
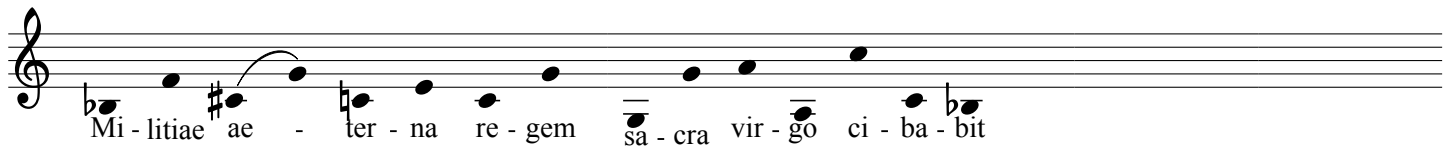
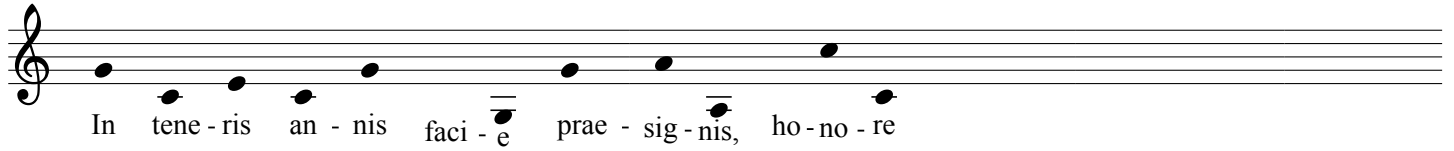
## 2. Sibylla Lybica



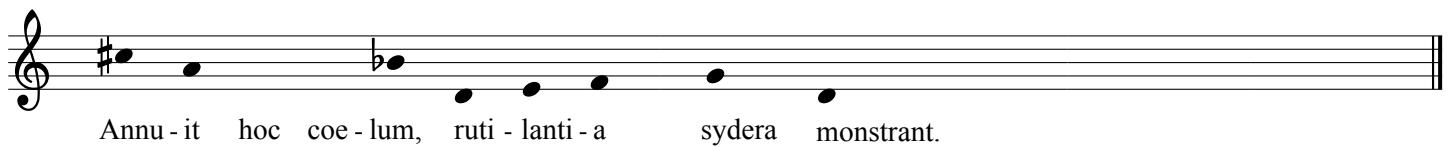
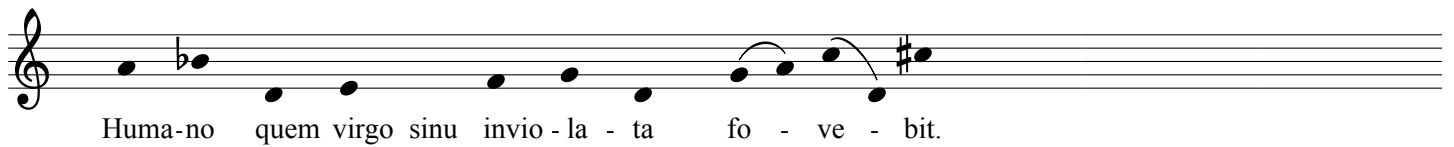
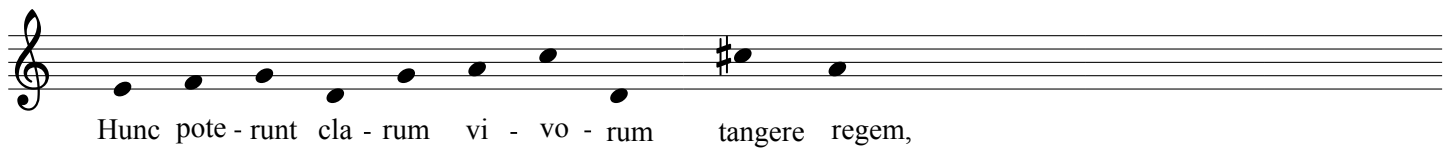
# 3. Sibylla Delphica



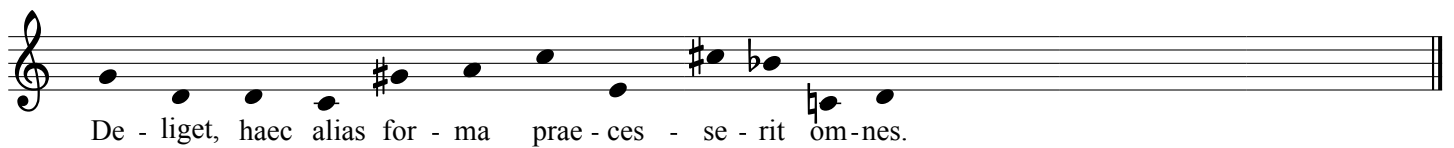
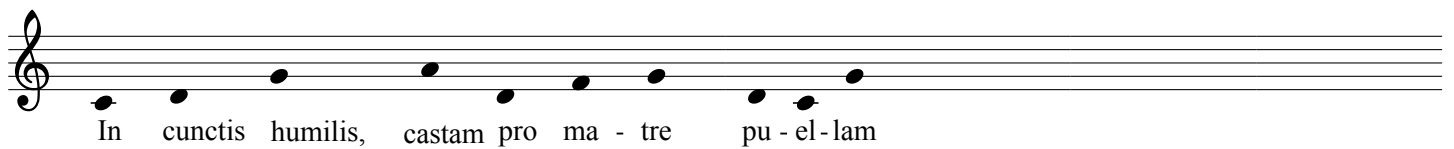
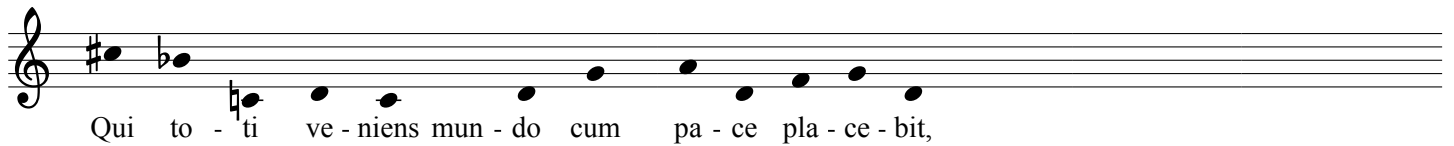
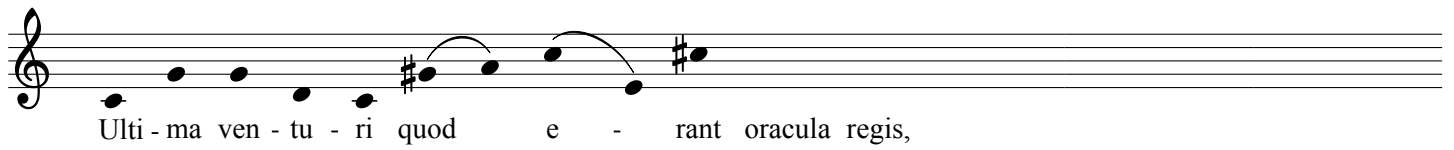
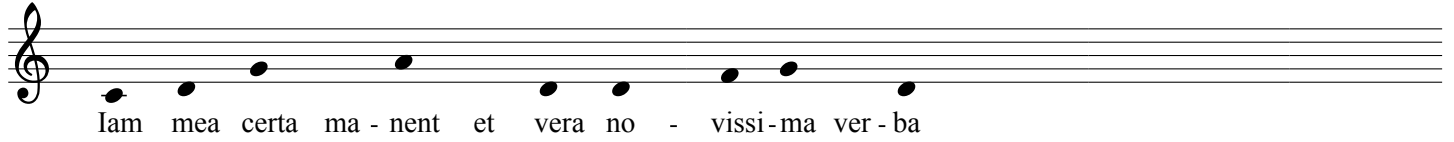
# 4. Sibylla Cimmeria



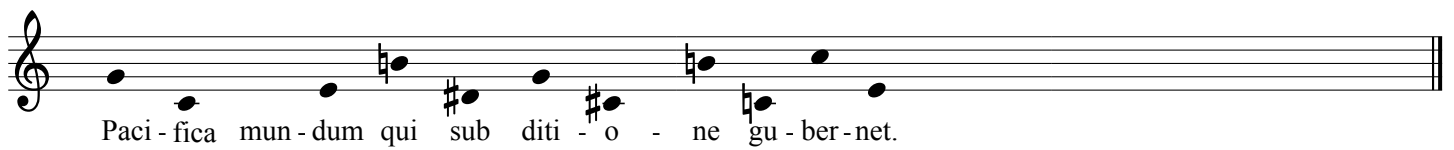
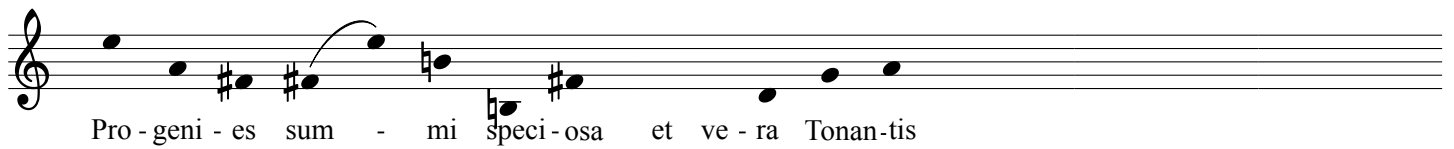
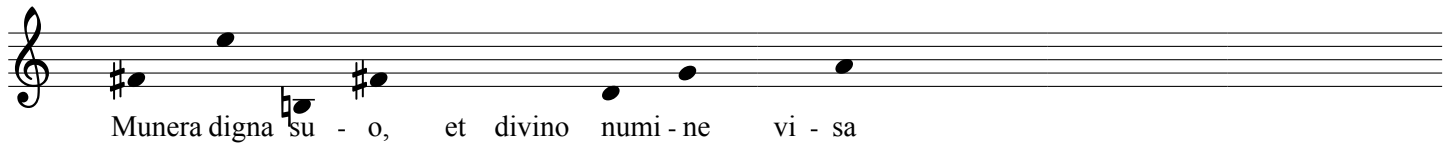
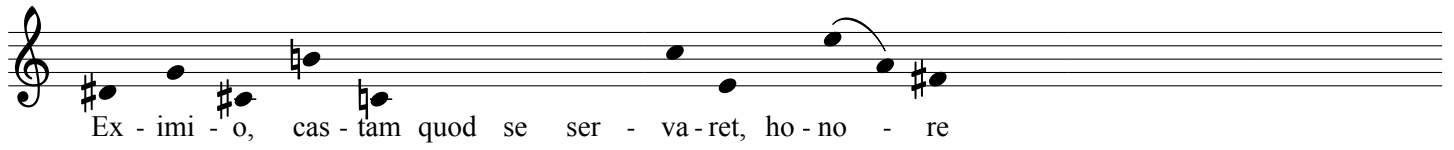
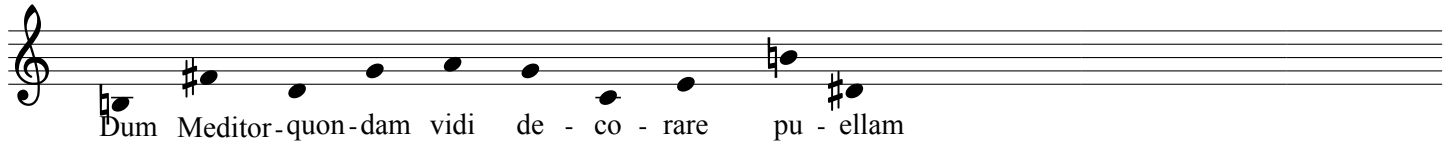
# 5. Sibylla Samia



# 6. Sibylla Cumana

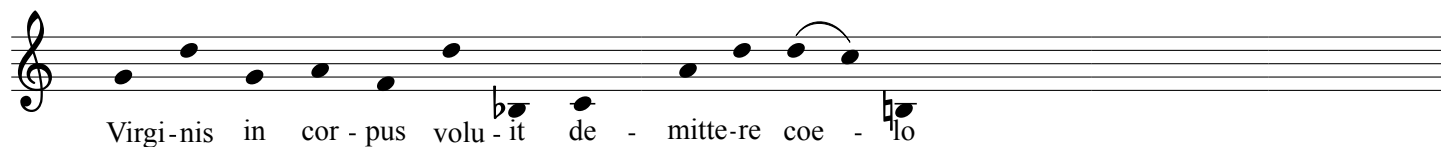
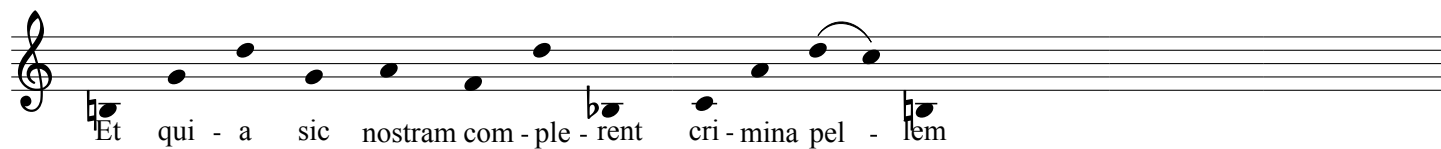
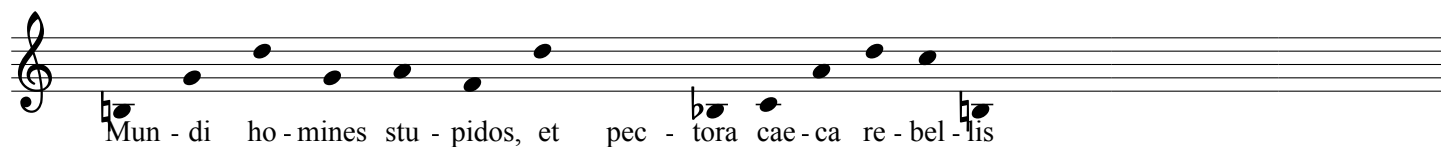
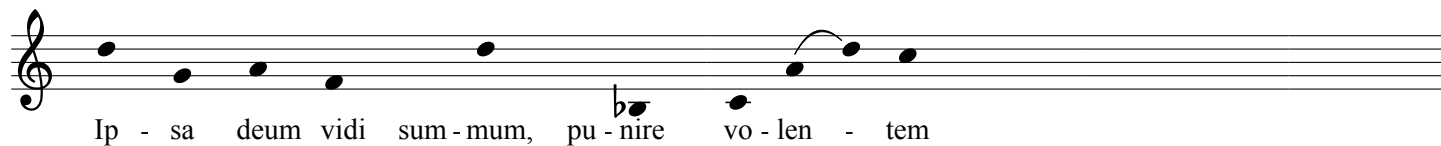


# 7. Sibylla Hellespontica

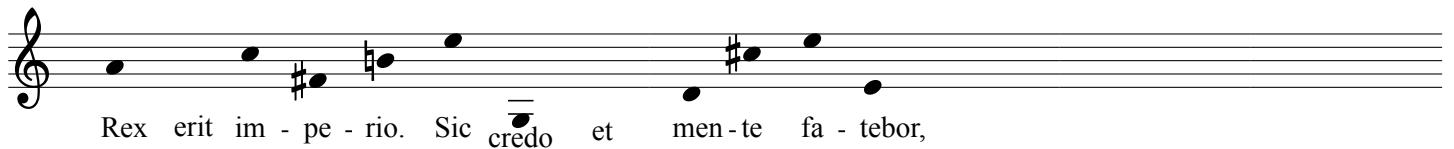
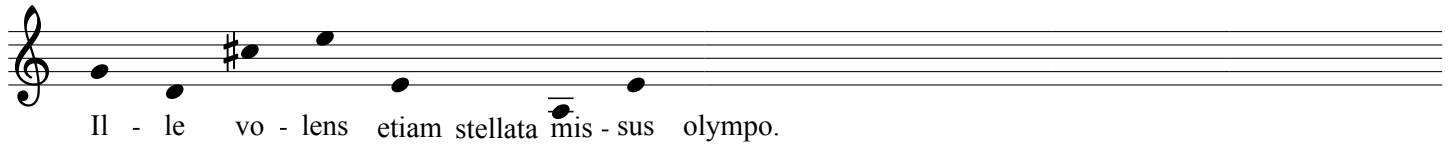
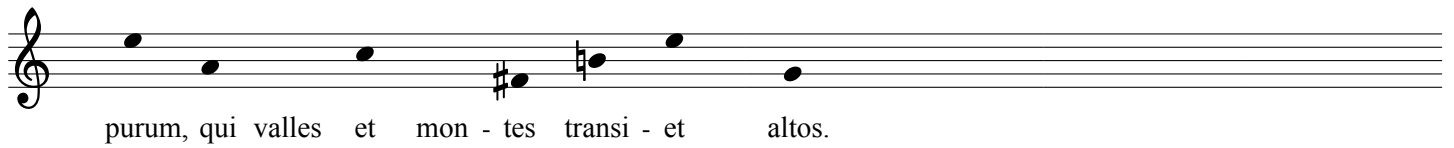




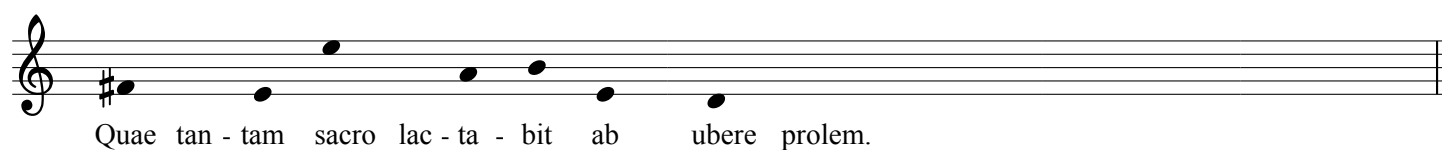
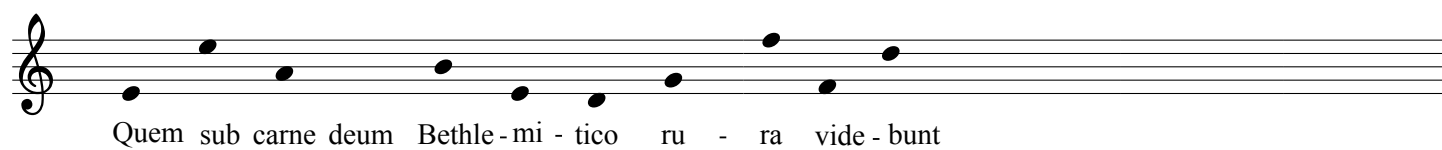
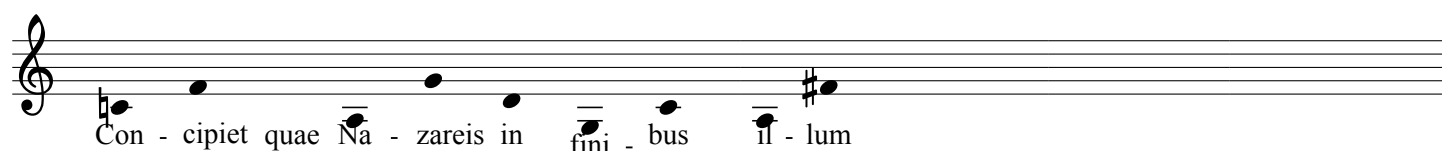
# 8. Sibylla Phrygia



# 9. Sibylla Europaea



# 10. Sibylla Tiburtina



# 11. Sibylla Erythraea

Cer - no de - i na - tum, qui se di - mi - sit ab al - to

U - tima fe - li - ces referent cum tem - pora so - les

Hebrae - a quem vir - go fe - ret de stir - pe de - co - ra

In ter - ris mul - tum teneris pas - su - rus ab an - nis

Magnus ē - rit tamen hic di - vi - no carmi - ne va - tes,

Virgi - ne matre sa - tus, pruden - ti pecto - re ve - rax.

# 12. Sibylla Agrippa

